

**Buying new furniture?
Give a gift, donate your old items.**

01270 586186
www.stpaulscentre.org.uk
www.facebook.com/stpaulscentre
admin@stpaulscentre.org.uk

St Paul's Centre
Hope | Dignity | Confidence | Opportunity
Registered Charitable Trust 1001556
Hightown, Crewe. CW1 3BY

For all your :-

Plumbing

Tiling

Decorating

Plastering

*& for your
FREE estimate*

call Nige Ravenscroft on:

Hi Grade **DIY** **tel. 01270 661549**
mob. 07766 928851
Hi Grade quality work !

News & Views

Oxley's Funeral Services *Family Owned and Serving the Community for Three Generations*

Pre-payment funeral plans

Funeral Planning relieves your loved ones of stress at a vulnerable time.
By paying for your funeral arrangements now:-
You secure today's prices.
Ensure your wishes are carried out.
Ease your family of the financial burden of funeral expenses.

CREWE 01270 214009 Cumberland House Market Close	NANTWICH 01270 625230 32 Pillory Street Nantwich
-------------------------------------------------------------------------	-------------------------------------------------------------------------

enquiries@oxleysfuneralservices.co.uk
www.oxleysfuneralservices.co.uk
Serving Nantwich, Crewe and all Surrounding Areas



February 2026

All Saints' Church, Stewart Street, Crewe CW2 8LX
Sunday Service Time
10.45 All Saints' Church.

Cursillo meeting Monday 2nd February 7.30pm at All Saints' Hall.



Third Sunday All Saints' Church

10.45 am: Normal service with activities for children led by Becky Hurst in the Hall.

Mid week service Wednesday All Saints' Church 11 am

Guild of Health 4th February Wednesday at 9.30 am
All Saints' Church Hall.

Soup Lunch 12 - 1pm every Wednesday All Saints' Church Hall.

Seedlings under 5's with adults Friday term time 9.30 - 10.45. All Saints' Church Hall.

One of the bravest things you can do is ask for help.

Becky our Community Worker says if you need help, then ask and we will do our best to tell you where you can obtain this from.

1st February Candlemas

8th February Nantwich Deanery Meeting

17th February Shrove Tuesday (Pancake Day)

18th February Ash Wednesday

22nd February Sunday beginning of Lent

Notice Holy Spirit Renewal Day with CMM

Wednesday 25th February in the church hall 10am—3pm

10am refreshments start 10.30am Lunch 12—1.00pm

All welcome . No fee but do contribute money if you can but not essential your presence is more important. See page 8.

The deadline for the March magazine is
Monday 9th February 2026
Send articles and pictures in Word Document for
computers or legibly handwritten. Thanks.

BREATHE BETTER SING TOGETHER

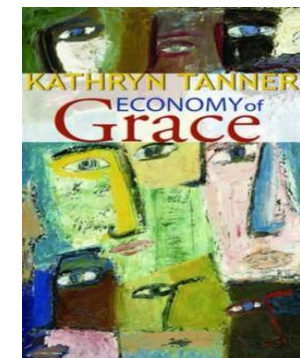


Sing along sessions open to all
Wednesdays 2.30 pm to 3.30 pm
All Saints Church Hall, Stewart St, Crewe, CW2 8LX.

Continued from page 6.

The powerful third chapter makes this book an important read for anyone who wants to change the present multinational economics of greed but feels helpless to do anything about the increasing inequalities in our society and in the global economics of which our country is a part.

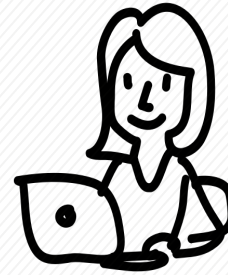
Written by Maggie Shaw



Directory of All Saints' Church

Minister	Rev. Jim Britcliffe	07536
	jim.britcliffe@btinternet.com	184155
Reader	Rev. Suzie Edleston	
	c/o The Vicarage, 79 Stewart Street, Crewe. CW2 8LX	560310
	Email: allsaintscrewe@gmail.com	
	Website: www.allsaintscrewe.org.uk	
Reader	Anne Marshall	214695
Safeguarding	Janette Webster	07951 089790
Healing Service	Anne Marshall	214695
Magazine Editor	Wendy Peacock ourparishmag@gmail.com	214292
Magazine Distribution	Maggie and Alan Shaw	669774
All Saints Church Officers		
Church Warden	Janette Webster	07951 089790
PCC Secretary	Graham McKenzie	
PCC Treasurer	Alan Shaw	669774
Director of Music	Maggie Shaw	669774
All Saints Activities & Contacts		
Church Hall Hire	Contact church office Stuart Mackay	560310
Soup Lunch	Maggie Shaw	669774

WELCOME FROM THE EDITOR



Christmas finishes on the 2nd February with Candlemas: hence the candles on the front cover.

The Churches Together Taizé service was held on 18th January and it was well attended. See pictures inside.

This month, as the children's page remind us, we have pancake day on Shrove Tuesday. Then lent begins with Ashing on Ash Wednesday in our normal service. On Lent Sunday we sing our traditional hymn, Forty day and Forty nights.

On Wednesday 25th February we welcome Christian Music Ministries' Holy Spirit Renewal Day. Do come if you can for the whole day or for the morning or afternoon. and be blessed. There will be soup lunch as normal but with two choices of soup, one of which will be vegan. Please do book so we know how many to cater for.

Roger Jones is an experienced leader and easy to listen to. This event is open to everybody, not just people from All Saints' Church, so do invite others along.

Andrew has written a knowledgeable article on clematis, and I thank him for that. There is a book review on pages 6 & 15. Other articles would be appreciated.

There is an advance notice about the Taizé services and this year's Carol service as well: see page 12.

What shall I write?

What shall I write, my Lord?
Write about me
What shall I tell them, Lord?
Tell them how beautiful I am.

But that's been written already, Lord
In the sky,
In the pine needles under my feet,
In granite and sand.
In all of the sparkle and shine
Of your world.

Elizabeth Rooney



Celtic Prayer

written by David Adam

Lord, open our hearts to your love,
and make your home within us.
As you took upon you our nature,
grant that we may be partakers of the Divine.
Grant that we may ever rejoice in your presence,
King of kings and Lord of lords.

The Father, who has shown his love for us,
be with us.
The Son, who has come to be among us, be with us.
The Spirit, who fills the whole world, be with us.
The Holy Three be within and without us, now and
evermore.

Taizé Sunday Services 2026

- 5th February
- 5th March
- 19th April:
- 17th May
- 21st June
- 19th July
- 16th August
- 20th September
- 18th October
- 15th November

All the Taizé services are held in the church and start at 6.30 pm.

20th December Carol Service
Time to be announced.

poole alcock
SOLICITORS

Looking for peace of mind?
Ensure your affairs are in the hands of those you trust. Give yourself and your loved ones peace of mind by having a suitable Will and Power of Attorney in place.

Home visits are available

Call our specialist private client team at our Crewe office on **01270 256665** or visit **www.poolealcock.co.uk**

OFFICES AT: ALSAGER • CONGLETON • CREWE • NANTWICH • SANDBACH

Lexcel
Practice Management Standard
Law Society Accredited



IAN WATSON
PAINTER AND DECORATOR

Tel: **01270 214862**

Over 20 years experience
Reasonable rates from a small friendly business with many local customers.



Out of the Ancient Fells
a composer, a symphony,
a dream
by Maggie Shaw

one of the great reads available from
www.eregendal.com

OUT OF THE ANCIENT FELS
Maggie Shaw
a composer, a symphony, a dream



***Economy of Grace* by Kathryn Tanner,**

published by Fortress Press in 2010.

The author of this readable discussion about faith and economics is the Frederick Marquand Professor of Systematic Theology at Yale Divinity School.

The book is divided into three sections: (1) An Economy of Grace?; (2) Imagining Alternatives to the Present Economic System; and (3) Putting a Theological Economy to Work. It describes what Christianity can bring to the table when discussing world and national economics and how Capitalist Competition can benefit from the Principle of Noncompetitiveness.

The author explains many complex and key economic principles in easy to understand ways, using both descriptions and practical illustrations. Particularly clear was the example of a lighthouse as a non-competitive good which is not reduced at all by the number of ships taking heed of its warning. Her writing helped me understand the differences between Keynesian economics and post-Ford industrial and finance strategies, and how the present policies of the IMF are helping to compound third-world poverty and worsen lack of development. The book explains how unregulated financial markets have few links with physical property and real wealth, but their failures have very real effects on the poor when an inflationary bubble bursts, such as in the 2008-9 Global Financial Crisis and the Recession stoked by the U.S. housing bubble.

Those with the most power and influence in the world are not likely to change the status quo unless there is a positive reason for doing so. Tanner explains how a return to some aspects of Keynesian economics would benefit both capitalists and consumers, by producing more customers for goods within countries and through improving the living standards of the least wealth nations, thereby creating new overseas markets.

Cont page 15

The Winter Flowering Clematis:

The Balearic clematis, *Clematis balearica*, and the related species *C. calycina* and *C. cirrhosa*, are excellent choices for the modern garden, taking up little horizontal space as they're climbers, easily controlled, evergreen, and flowering for many months of the year as our climate gets warmer. One gardening writer some years ago said, "I've never seen it do any good outside", and yet here we are.

Clematis balearica starts flowering in October and the flowers are greenish white, here shown growing into one of my bay trees:

Clematis cirrhosa Freckles has flowers spotted with red in their interior, giving a pink appearance:

This starts flowering in September; in fact there are often a few flowers in the summer as well, but the peak of flowering is November to Christmas, as it is with all those I've described. In January and February there are still plenty of flowers, but the flowering declines a little. They're all over by April. Then we wait until July or August for the first flowers of "Freckles".

The roots are better in shade from other plants or on the shady side of a wall. The flowers need to be in sun, or at least in full light, unobstructed from overhead.

Dr Andrew Davidson



St Paul's Pantry
 Hope | Dignity | Confidence | Opportunity

- Potatoes - tinned or powdered
- Biscuits / Crackers - snack foods
- Custard - tinned, packet, carton
- Pasta / Spaghetti / Noodles
- Soup - tinned and packets
- Sponge Puddings- tinned
- Rice Pudding - tinned
- Vegetables - tinned, dried
- Baked Beans / Spaghetti
- Sauces - curry / pasta
- Fruit juice - cartons
- Tomatoes - tinned
- Jam / Marmalade
- Tea bags / Coffee
- Instant gravy
- Meat - tinned
- Fish - tinned
- Fruit - tinned
- Milk - UHT
- Sugar
- Cereals
- Rice

Please note we cannot accept items that are out of date.

Thank you so much for your support.

Every item makes a difference.



Photos from the Churches Together in Crewe Taizé service for the Week of Prayer for Christian Unity on 18th January.



Holy Spirit Renewal Day



Led by Roger Jones -
Anglican Lay Reader and
Director of Christian Music Ministries

All Saints Church
Crewe, CW2 8LX

Wednesday 25th February
10:30am to 3pm
Arrive from 10am
Soup lunch included

Spend the day learning about
Receiving His Power and
Responding to His Presence

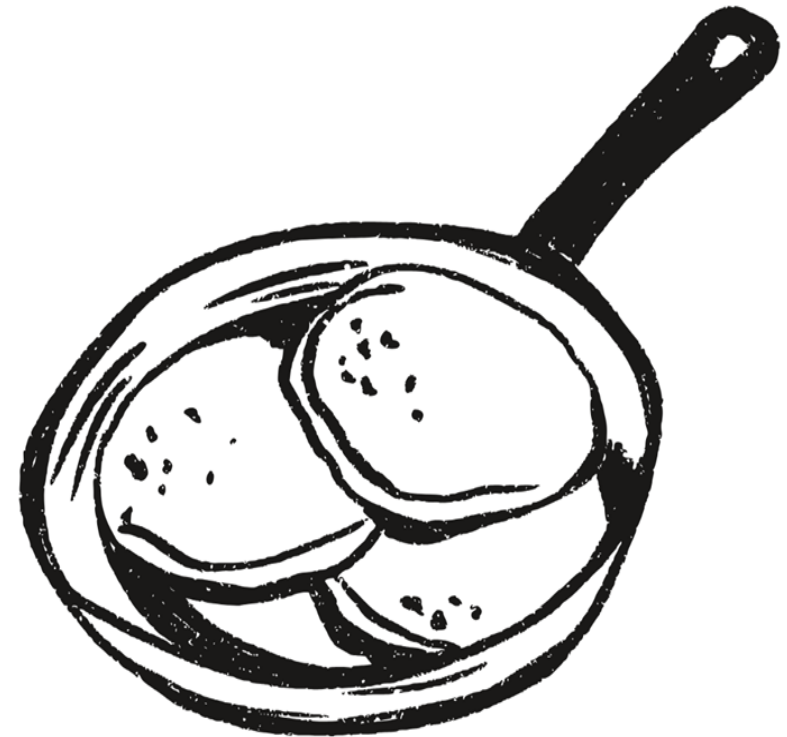
Donations accepted

Please book your place by contacting
allsaintscrewe@gmail.com



All are invited please do book, soup lunch included so we know how many to cater for.

Pancake Day Shrove Tuesday



**Add your favourite toppings
to the pancakes in the pan.**